

# clever



## Flat 3 Belgrave Lane

, Plymouth, PL4 7DA

**£145**

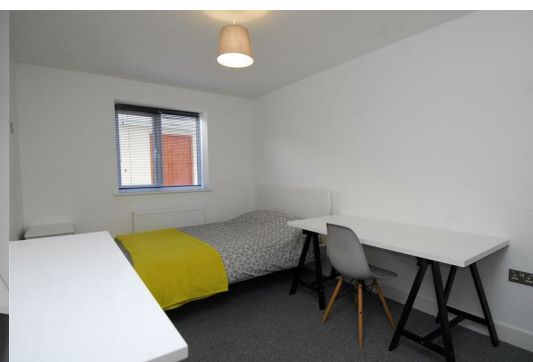
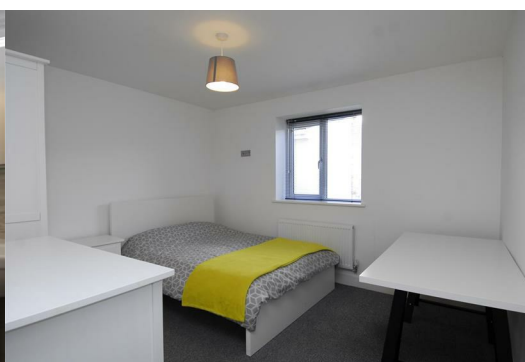


**\*\* STUDENT ONLY AVAILBLE SEPTMBER 2024 \*\***

The apartment is conveniently located just off Mutley plain, providing easy access to a variety of takeaways. The open-plan kitchen and lounge area offers ample space to cook, eat, and relax in front of the TV after a long day at university. The apartment boasts two spacious bedrooms, but the best part is the on-site parking and bike storage, ensuring that you will never have to struggle to find a parking space again!

Room 1 - £145

Room 2 - £145



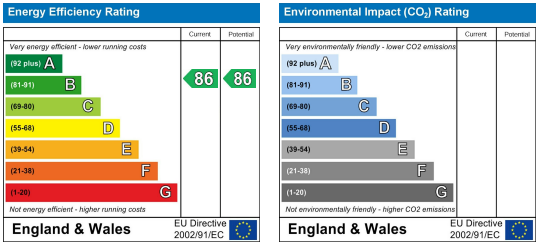
Area Map



Floor Plans



Energy Efficiency Graph



These particulars, whilst believed to be accurate are set out as a general outline only for guidance and do not constitute any part of an offer or contract. Intending purchasers should not rely on them as statements of representation of fact, but must satisfy themselves by inspection or otherwise as to their accuracy. No person in this firms employment has the authority to make or give any representation or warranty in respect of the property.